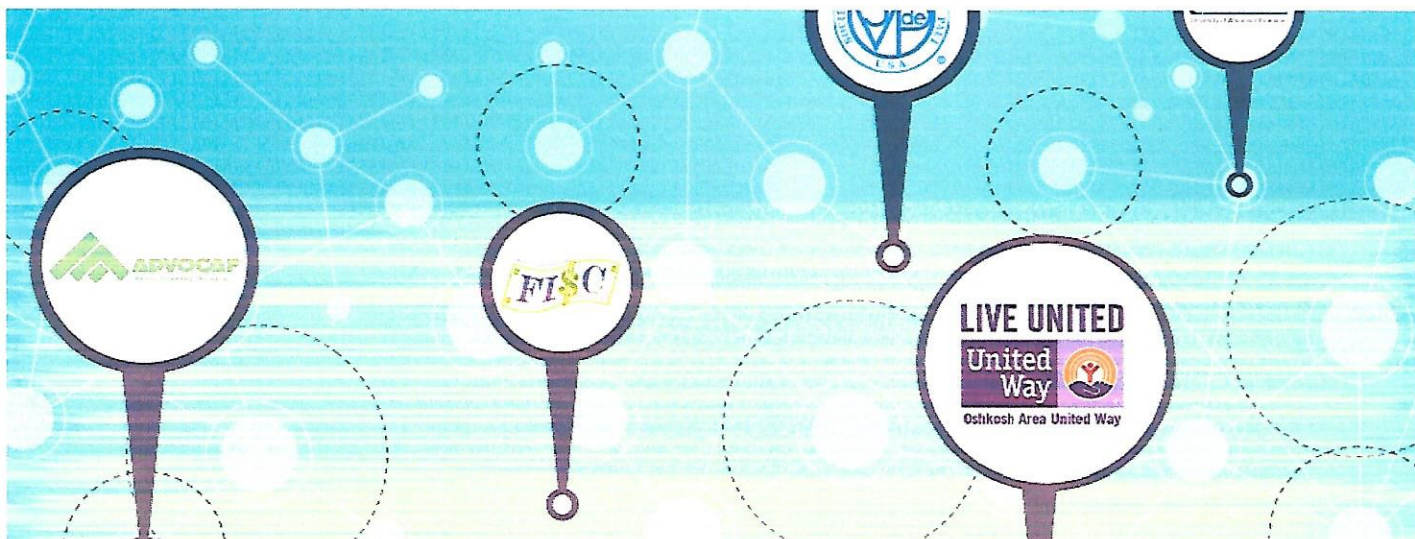




[about hub](#) / [get a coach](#) / [become a volunteer](#) / [contact us](#) / [donate now](#)



HUB PARTNERS

HUB PARTNERS

WHO IS HUB?

Hub partners know that no person moves to a place of self-sufficiency alone, so it makes perfect sense that no one organization can help that person achieve the goals that will get them there.

Hub is a growing group of nonprofit organizations, government agencies and businesses that have a shared vision of improving the lives of all residents in the Oshkosh area. They work together formally, collectively, collaboratively surrounding this shared vision of Oshkosh area residents starting to access the help they need with a single phone call.

Here are a few ways the hub model works:

- Partners create a broad, "one contact" connecting point, to help participants get started quickly
- Partners agree to connect participants with multiple resources, rather than expecting them to overcome each individual life challenge in a vacuum
- Partners provide consistent training for volunteers who mentor and support participants to achieve self-sufficiency
- Partners agree to shared goals and shared outcomes (everyone has "skin in the game")

Current Hub Partners

- 211
- ADVOCAP, Inc.
- American Red Cross in Northeast Wisconsin
- Boys & Girls Club of Oshkosh
- Christine Ann Domestic Abuse Services
- Day By Day Warming Shelter
- Father Carr's Place 2B
- FISC, a Program of Goodwill Industries NCW
- Fox Valley Technical College and Foundation
- Forward Service Corporation
- Habitat for Humanity
- Lutheran Social Services - Making a Ride Happen
- Oshkosh Area Community Foundation



hub current coaching sites:

[ADVOCAP](#)

[Oshkosh Area Community Pantry](#)

[Salvation Army](#)

hub collaborating partners:

American Red Cross

Boys & Girls Club

Christine Ann Domestic Abuse Services

FISC

Father Carr's

Habitat for Humanity

Forward Services Corporation

Fox Valley Technical College
Spanbauer

- Oshkosh Area Community Pantry
- Oshkosh Area United Way, Inc.
- Oshkosh/Winnebago County Housing Authority
- Saint Vincent de Paul Society Oshkosh
- Salvation Army
- STEP Industries
- Tri-County Community Dental Clinic
- UW-Oshkosh Living Healthy Community Clinic
- Verve, a Credit Union
- Winnebago County Dept. of Human Services
- Winnebago County UW-Extension
- Winnebago County Literacy Council
- World Relief

Learn how to Become a Partner [here](#).

For meeting dates and times, or for more information on hub, [contact us](#).

Day by Day Warming Shelter

Saint Vincent de Paul Society

Fox Valley Technical College
Riverside

Lutheran Social Services - Making
A Ride Happen

Oshkosh Area United Way/211

Oshkosh/Winnebago County
Housing Authority

Oshkosh Area Community
Foundation

UW-Oshkosh Living Healthy
Community Clinic

World Relief

Verve, A Credit Union

Winnebago County UW-Extension

Winnebago County Dept. of Human
Services

Winnebago County Literacy Council

STEP Industries

[find help](#) | [about hub](#) | [become a volunteer](#) | [contact us](#) | [donate](#)

hub • oshkosh, wi • 920-426-0150

Sign up to receive our [newsletter](#) and stay up to date on "What's hubbening"

info@huboshkosh.org